

DEC 2024

Finishing Standards Guide

Minimum Standards External Concrete Finish

This document outlines the external finish that can be expected on our range of pools delivered within America.

The external shell of all Plungie pools are finished and delivered to a National Precast Concrete Association (NPCA) Product Standard Finish.

General Information

Our range of Plungies are produced using advanced manufacturing methods under factory-controlled conditions. The concrete used for every pool is quality tested before being poured and the nature of concrete means some natural variation to color and mould design, may occur for each pool when finished.

These variations are normal and do not have an impact on the structural integrity of each pool. Our pools are checked at every stage of production to ensure a quality product leaves the factory.

The following guide outlines some of the variations that can be expected for how your pool will arrive on site. All Plungies are finished in accordance with a National Precast Concrete Association (NPCA) Product Standard Finish.

All images in this guide are presented as examples of what could be expected while still being delivered to National Precast Concrete Association (NPCA) Product Standard Finish. No images in this guide show unacceptable finishes.

All images shown have been taken of an actual Plungie and are presented 'as is' with no digital alterations at any stage.

Design Notes

For installations that require an architectural finish or particular design aesthetic we recommend the application of a suitable coating undertaken by a professional.

At no time should the surface of your Plungie be ground or modified by removing concrete or ecoFinish material. Doing so will void the 10 year manufacturer warranty of the pool and risks the structural integrity of the pool.

Blowholes

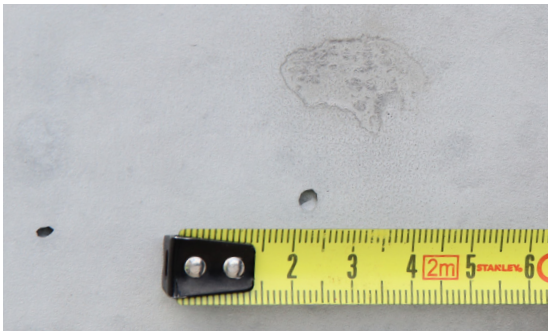
Blowholes (also known as bug holes) are individual rounded or irregular cavities that are formed against the formwork in the manufacturing process. Small blowholes tend to be approximately hemispherical in shape with no pattern to where they are located on the external of our pool shells.

The following images show what could be reasonably expected for size, frequency and location of blowholes on each Plungie and constitute a National Precast Concrete Association (NPCA) Product Standard Finish.



Note: The bubbles that show on the underside surfaces of stairs etc are normal and not visible in most installations. These are unavoidable due to mould design and have no impact on the overall structure of the pool.

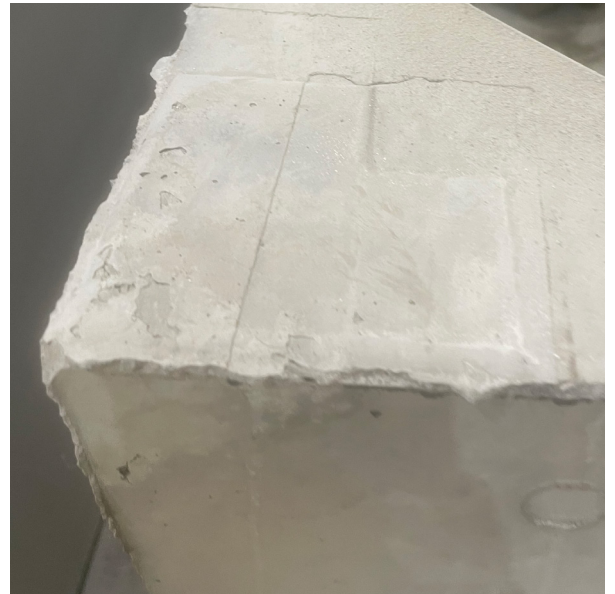
Some minor markings may also be present on the surface from the casting process or due to minor rectification work for blowholes, that were deemed larger than a National Precast Concrete Association (NPCA) Product Standard Finish. These markings are superficial only and do not present a structural risk.



These images show what can be reasonably expected on each Plungie and still constitute a National Precast Concrete Association (NPCA) Product Standard Finish.

Surface Details - Top Edge

Due to the nature of precast concrete, the top edge of your Plungie is not always to an architectural finish standard. Some small and slight imperfections caused by the moulding process may exist.

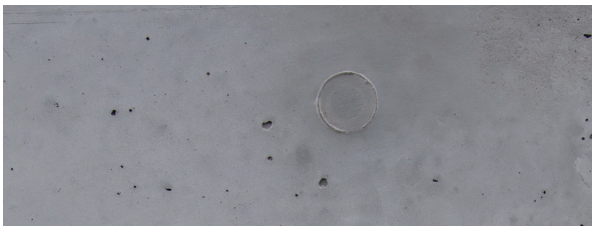


To maximize the aesthetic appeal and longevity of your Plungie we highly recommend the use of a coping tile. This will not only improve the look but also help protect the concrete and ecoFinish surface from wear and tear.

Coping tiles can easily be added to the pool, however, we don't sell them directly.

Color Consistency

As with all concrete casting, variations in markings and the color of the outer concrete could also be expected due to material variances in the concrete mix. As well as coloring of the concrete itself, some transfer of color may occur from the moulding process leaving a light reddish/rust tinge.



The above imagery shows the shades that can be expected while remaining within the set standards.



www.plungie.com/en-us/
855 PLUNGIE (855-758 6443)